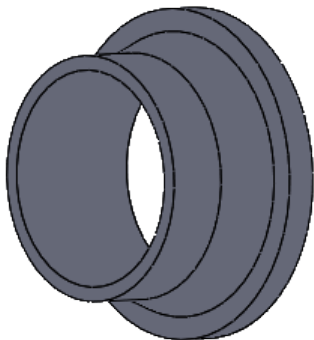


Collet court



Options

	CCS	D063	S07	I	01
Collet court	Diamètre (mm)			Construction	Matière
	63	315		I : Injecté	01 : PE 100
	75	355		U : Usiné	
	90	400		P : Polyfusé	
	110	500	SDR		
	125	560	7.4		
	140	630	9		
	160	710	11		
	180	800	17		
	200	900	26		
	225	1000			
	250	1200			
	280				

Caractéristiques

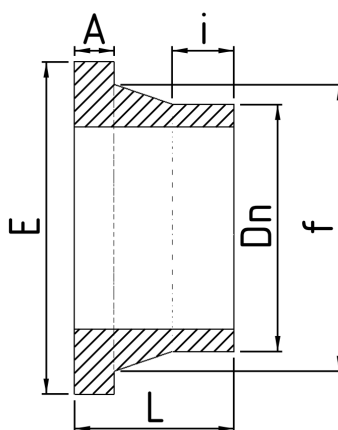
Matière : Polyéthylène haute densité (PEHD) PE 100

Fabrication : injectés ou usinés suivant les diamètres

Norme dimensionnelle : Suivant DIN 16963 partie 2

Application : Transport de tous fluides avec ou sans pression liquides ou gazeux

Dimensions



SDR 7.4

Référence	Dn	A	f	E	i	L	kg
CCSD315SDR07U01	315	47	335	392	82	165	9.2
CCSD355SDR07U01	355	53	373	449	52	148	10.7
CCSD400SDR07U01	400	60	427	506	58	151	16.2
CCSD450SDR07U01	450	67	514	616	67	160	19.8
CCSD500SDR07U01	500	74	530	616	60	155	20.4
CCSD560SDR07U01	560	83	615	723	54	175	32.6

SDR 9

Référence	Dn	A	f	E	i	L	kg
CCSD315SDR09U01	315	40	335	392	83	158	8.8
CCSD355SDR09U01	355	47	373	449	52	140	9.6
CCSD355SDR09U01	355	47	373	440	52	140	10.4
CCSD400SDR09U01	400	53	427	506	58	143	14.8
CCSD450SDR09U01	450	63	514	616	68	158	17.6
CCSD500SDR09U01	500	65	530	616	61	147	18.2
CCSD560SDR09U01	560	70	615	723	54	165	27.2

SDR 11

Référence	Dn	A	f	E	i	L	kg
CCSD063S11I01	63	14	75	103	23	60	0.16
CCSD090S11I01	90	17	105	139	26	70	0.31
CCSD110S11I01	110	18	125	159	32	75	0.44
CCSD125S11I01	125	24	132	159	26	74	0.5
CCSD140S11I01	140	25	155	189	30	86	0.77

Référence	Dn	A	f	E	i	L	kg
CCSD160S11I01	160	25	175	213	40	96	0.97
CCSD180S11I01	180	30	183	213	65	97	1.15
CCSD200S11I01	200	32	232	269	50	129	2.8
CCSD225S11I01	225	31	235	269	28	104	2.7
CCSD250S11I01	250	35	285	321	39	116	4.2
CCSD280S11I01	280	35	291	321	68	128	4.26
CCSD315S11I01	315	35	335	371	81	152	6.2
CCSD355S11I01	355	40	373	431	51	135	8.3
CCSD400S11I01	400	45	427	483	56	137	9.5
CCSD450S11I01	450	60	514	594	65	150	17
CCSD500S11I01	500	60	530	607	30	130	16.1
CCSD560S11I01	560	60	615	702	50	146	21.2
CCSD630S11I01	630	65	642	710	50	143	20.4
CCSD710S11I01	710	75	737	801	35	150	28.4
CCSD800S11I01	800	80	840	906	30	150	37.2
CCSD900S11I01	900	90	944	1006	28	158	49.2

SDR 17

Référence	Dn	A	f	E	i	L	kg
CCSD063S17I01	63	14	75	103	27	64	0.13
CCSD075S17I01	75	16	89	123	27	67	0.22
CCSD090S17I01	90	17	105	139	26	69	0.26
CCSD110S17I01	110	18	125	159	25	73	0.36
CCSD125S17I01	125	18	132	159	30	76	0.41
CCSD140S17I01	140	18	155	189	30	80	0.53
CCSD160S17I01	160	18	175	213	25	91	0.65
CCSD180S17I01	180	20	183	213	76	102	0.81
CCSD200S17I01	200	24	232	269	50	118	2.2
CCSD225S17I01	225	24	235	269	35	99	1.7
CCSD250S17I01	250	25	285	321	41	104	2.6
CCSD280S17I01	280	25	291	321	66	111	3.2
CCSD315S17I01	315	25	335	371	74	134	4.6
CCSD355S17I01	355	30	373	431	60	128	6.3
CCSD400S17I01	400	33	427	483	58	121	7.1
CCSD450S17I01	450	45	514	586	67	143	10.9
CCSD500S17I01	500	45	530	594	60	129	9.2
CCSD560S17I01	560	50	615	686	50	133	14

Référence	Dn	A	f	E	i	L	kg
CCSD630S17I01	630	50	642	694	46	131	12.8
CCSD710S17I01	710	52	737	801	35	128	17.8
CCSD800S17I01	800	53	840	906	40	125	22.4
CCSD900S17I01	900	59	944	1006	40	130	29.4
CCSD1000S17I01	1000	65	1047	1111	40	135	32
CCSD1200S17I01	1200	79	1245	1331	35	170	68.8

SDR 26

Référence	Dn	A	f	E	i	L	kg
CCSD160SDR26I01	160	14	175	206	25	70	0.5
CCSD180SDR26I01	180	16	183	206	76	98	0.65
CCSD200SDR26I01	200	19	232	261	50	115	2
CCSD225SDR26I01	225	19	235	261	35	94	1.4
CCSD250SDR26I01	250	20	285	316	41	100	2.2
CCSD280SDR26I01	280	20	291	316	72	111	3
CCSD315SDR26U01	315	20	335	372	74	129	4.4
CCSD355SDR26U01	355	30	373	422	50	124	2.7
CCSD400SDR26U01	400	26	427	472	58	115	6.7
CCSD450SDR26U01	450	36	514	577	67	127	7.5
CCSD500SDR26U01	500	37	530	577	60	122	8.1
CCSD560SDR26U01	560	40	615	678	54	132	10.6
CCSD630SDR26U01	630	40	642	678	44	120	8.6
CCSD710SDR26U01	710	52	737	782	35	128	11.6
CCSD800SDR26U01	800	43	840	888	30	120	14.8
CCSD900SDR26U01	900	47	944	988	40	130	19.4
CCSD1000SDR26U01	1000	52	1047	1088	40	130	22.93